

DEPARTMENT OF ARCHITECTURE, U.T.



S No. NOTES

1. THIS DRG. IS THE PROPERTY OF THE DEPTT. OF ARCHITECTURE, U.T. CHANDIGARH FORMERLY THE U.P. CHANDIGARH. IT IS TO BE KEPT IN THE OFFICE OF THE ARCHT. IN CHARGE AND NOT TO BE LOANED OR REPRODUCED WITHOUT THE PERMISSION OF THIS DEPTT. IN WRITING.
2. CORRECTED WORKS IN BRICK OR IN PLASTER WITHOUT THE PERMISSION OF THIS DEPTT. IN WRITING.
3. CORRECTED WORKS IN BRICK OR IN PLASTER WITHOUT THE PERMISSION OF THIS DEPTT. IN WRITING.
4. ALL EXTERNAL FACES OF BRICK WALLS SHALL BE FINISHED BY FACED BRICK.
5. ALL EXTERNAL FACES OF BRICK WALLS SHALL BE FINISHED BY FACED BRICK.
6. ALL EXTERNAL FACES OF BRICK WALLS SHALL BE FINISHED BY FACED BRICK.
7. ALL EXTERNAL FACES OF BRICK WALLS SHALL BE FINISHED BY FACED BRICK.
8. ALL EXTERNAL FACES OF BRICK WALLS SHALL BE FINISHED BY FACED BRICK.
9. ALL EXTERNAL FACES OF BRICK WALLS SHALL BE FINISHED BY FACED BRICK.
10. ALL EXTERNAL FACES OF BRICK WALLS SHALL BE FINISHED BY FACED BRICK.
11. ALL EXTERNAL FACES OF BRICK WALLS SHALL BE FINISHED BY FACED BRICK.
12. ALL EXTERNAL FACES OF BRICK WALLS SHALL BE FINISHED BY FACED BRICK.
13. ALL EXTERNAL FACES OF BRICK WALLS SHALL BE FINISHED BY FACED BRICK.
14. ALL EXTERNAL FACES OF BRICK WALLS SHALL BE FINISHED BY FACED BRICK.
15. ALL EXTERNAL FACES OF BRICK WALLS SHALL BE FINISHED BY FACED BRICK.
16. ALL EXTERNAL FACES OF BRICK WALLS SHALL BE FINISHED BY FACED BRICK.
17. ALL EXTERNAL FACES OF BRICK WALLS SHALL BE FINISHED BY FACED BRICK.
18. ALL EXTERNAL FACES OF BRICK WALLS SHALL BE FINISHED BY FACED BRICK.
19. ALL EXTERNAL FACES OF BRICK WALLS SHALL BE FINISHED BY FACED BRICK.
20. ALL EXTERNAL FACES OF BRICK WALLS SHALL BE FINISHED BY FACED BRICK.
21. ALL EXTERNAL FACES OF BRICK WALLS SHALL BE FINISHED BY FACED BRICK.
22. ALL EXTERNAL FACES OF BRICK WALLS SHALL BE FINISHED BY FACED BRICK.
23. ALL EXTERNAL FACES OF BRICK WALLS SHALL BE FINISHED BY FACED BRICK.
24. ALL EXTERNAL FACES OF BRICK WALLS SHALL BE FINISHED BY FACED BRICK.
25. ALL EXTERNAL FACES OF BRICK WALLS SHALL BE FINISHED BY FACED BRICK.
26. ALL EXTERNAL FACES OF BRICK WALLS SHALL BE FINISHED BY FACED BRICK.
27. ALL EXTERNAL FACES OF BRICK WALLS SHALL BE FINISHED BY FACED BRICK.
28. ALL EXTERNAL FACES OF BRICK WALLS SHALL BE FINISHED BY FACED BRICK.
29. ALL EXTERNAL FACES OF BRICK WALLS SHALL BE FINISHED BY FACED BRICK.
30. ALL EXTERNAL FACES OF BRICK WALLS SHALL BE FINISHED BY FACED BRICK.
31. ALL EXTERNAL FACES OF BRICK WALLS SHALL BE FINISHED BY FACED BRICK.
32. ALL EXTERNAL FACES OF BRICK WALLS SHALL BE FINISHED BY FACED BRICK.
33. ALL EXTERNAL FACES OF BRICK WALLS SHALL BE FINISHED BY FACED BRICK.
34. ALL EXTERNAL FACES OF BRICK WALLS SHALL BE FINISHED BY FACED BRICK.
35. ALL EXTERNAL FACES OF BRICK WALLS SHALL BE FINISHED BY FACED BRICK.
36. ALL EXTERNAL FACES OF BRICK WALLS SHALL BE FINISHED BY FACED BRICK.
37. ALL EXTERNAL FACES OF BRICK WALLS SHALL BE FINISHED BY FACED BRICK.
38. ALL EXTERNAL FACES OF BRICK WALLS SHALL BE FINISHED BY FACED BRICK.
39. ALL EXTERNAL FACES OF BRICK WALLS SHALL BE FINISHED BY FACED BRICK.
40. ALL EXTERNAL FACES OF BRICK WALLS SHALL BE FINISHED BY FACED BRICK.
41. ALL EXTERNAL FACES OF BRICK WALLS SHALL BE FINISHED BY FACED BRICK.

S No. DESCRIPTION DATE SIGN

REVISIONS

SH. S. L. VARMA 19.8.69 CHIEF ADMINISTRATOR	
SH. M. N. SHARMA 13.8.69 CHIEF ARCHITECT	SH. R. D. HANRA 13.8.69 SENIOR ARCHITECT
SH. D. P. MEHTA 31.7.69 ARCHITECT	SH. IGBAL SINGH 14.7.69 ASSTT. ARCHITECT

OFFICE OF THE CHIEF ARCHITECT CHANDIGARH.

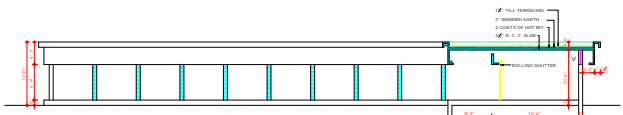
SCALE: 1/4" TO A FOOT DRAWN: KAVKANI RECORDED: NIRMAL KUMARI	DATE: 14.7.69 DRG. No. 622 JOB No. 1
--	--

SHOPPING CENTRE IN SECTOR 28 - C (ENCLOSED MARKET)

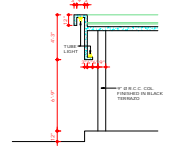
PLAN, ELEVATIONS & SECTION.



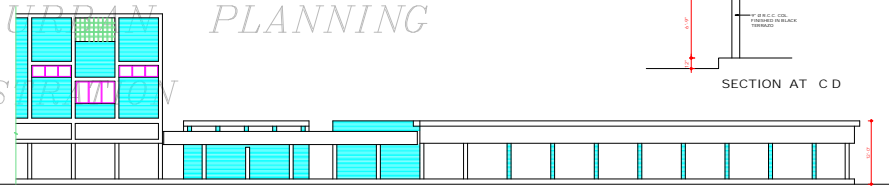
DETAIL OF BRACKET FOR VERANDAH SLAB



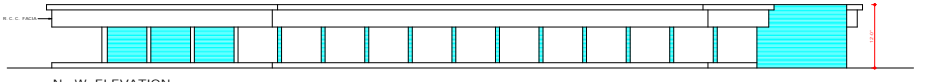
SECTION AT A-A



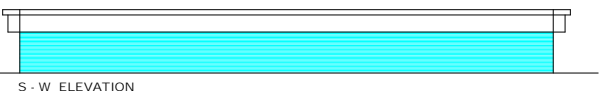
SECTION AT C-D



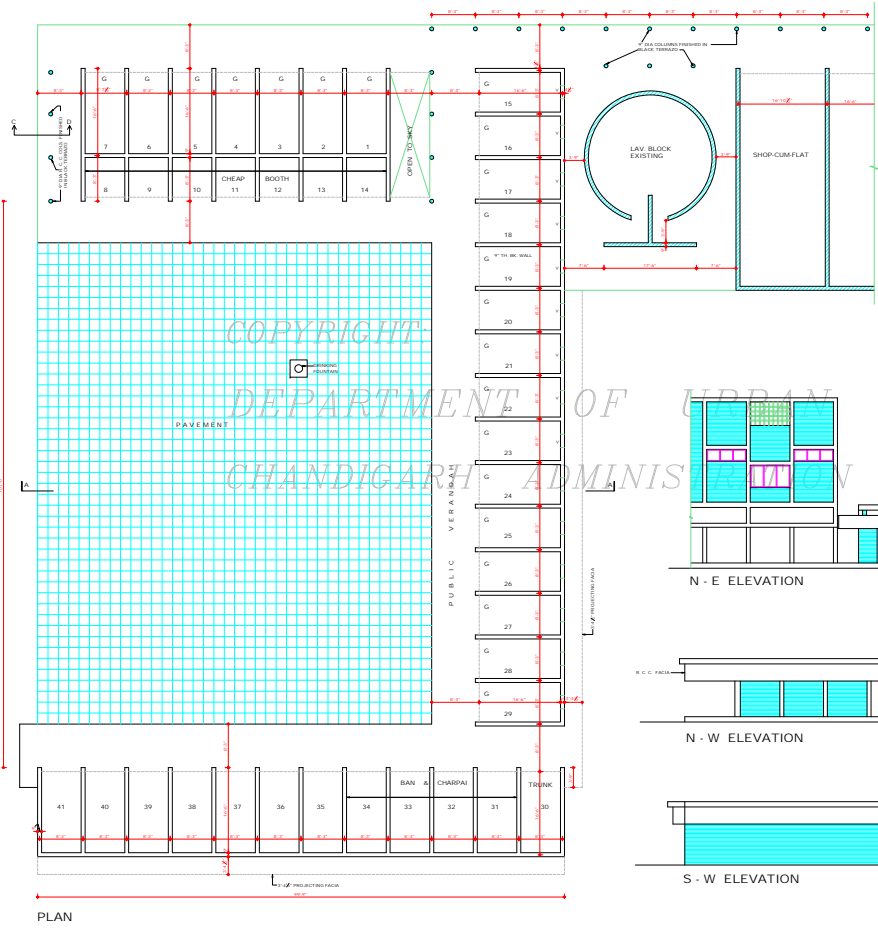
N - E ELEVATION



N - W ELEVATION



S - W ELEVATION



PLAN

**DISCLAIMER**  
THROUGH EVERY CARE HAS BEEN TAKEN TO PROVIDE THE CORRECT VERSION OF THE ARCHITECTURAL DRAWING, THE ARCHITECT DOES NOT GUARANTEE THE ACCURACY OF ANY INFORMATION. THE ARCHITECT DOES NOT ACCEPT ANY LIABILITY FOR ANY DAMAGE OR LOSS OF ANY KIND, INCLUDING BUT NOT LIMITED TO, THE LOSS OF PROFITS, BUSINESS, OR REVENUE, OR ANY OTHER ECONOMIC LOSS, ARISING FROM THE USE OF THIS ARCHITECTURAL DRAWING. THE ARCHITECT'S LIABILITY IS LIMITED TO THE ARCHITECTURAL DESIGN AND CONSTRUCTION OF THE BUILDING AS SHOWN IN THIS ARCHITECTURAL DRAWING. THE ARCHITECT DOES NOT ACCEPT ANY LIABILITY FOR ANY DAMAGE OR LOSS OF ANY KIND, INCLUDING BUT NOT LIMITED TO, THE LOSS OF PROFITS, BUSINESS, OR REVENUE, OR ANY OTHER ECONOMIC LOSS, ARISING FROM THE USE OF THIS ARCHITECTURAL DRAWING.

ATTESTED AS TRUE COPY  
SH. K. SINGH  
30.7.72  
ASSTT. ARCHITECT

COPYRIGHT  
DEPARTMENT OF URBAN PLANNING  
CHANDIGARH ADMINISTRATION