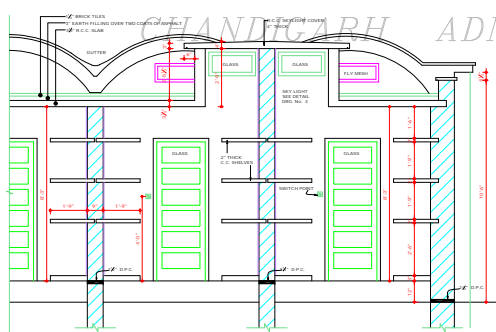


END ELEVATION
FOR TYPE B

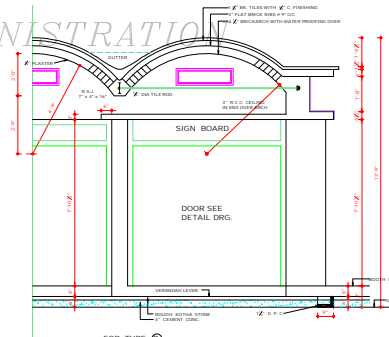
COPYRIGHT:

DEPARTMENT OF URBAN PLANNING

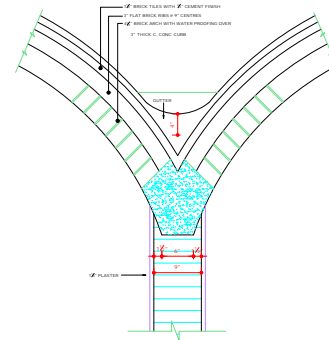
CHANDIGARH ADMINISTRATION



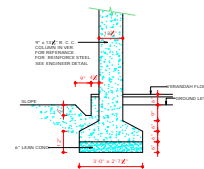
CROSS SECTION THROUGH STORES
FOR TYPE A FOR TYPE B



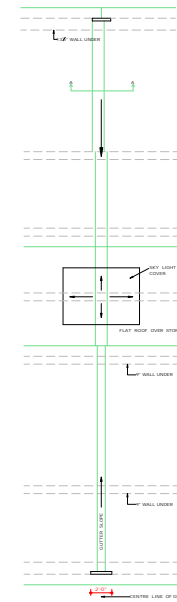
CROSS SECTION THROUGH VERANDAH OF END BOOTH
FOR TYPE B



1 1/2" DETAIL OF GUTTER AT A-A
FOR TYPE B



PART ROOF PLAN
FOR TYPE A & B



DEPARTMENT OF ARCHITECT
P.E.
CHANDIGARH.

NOTES-

1. THE QUALITY OF PRODUCTS IN THE ARCHITECTURE IS ASSESSING.
2. THE QUALITY OF THE WORKMANSHIP IS ASSESSING.
3. THE QUALITY OF THE MATERIALS IS ASSESSING.
4. THE QUALITY OF THE CONSTRUCTION IS ASSESSING.
5. THE QUALITY OF THE FINISH IS ASSESSING.
6. THE QUALITY OF THE INSTALLATION IS ASSESSING.
7. THE QUALITY OF THE MAINTENANCE IS ASSESSING.
8. THE QUALITY OF THE OPERATION IS ASSESSING.
9. THE QUALITY OF THE PERFORMANCE IS ASSESSING.
10. THE QUALITY OF THE SAFETY IS ASSESSING.
11. THE QUALITY OF THE SECURITY IS ASSESSING.
12. THE QUALITY OF THE HEALTH IS ASSESSING.
13. THE QUALITY OF THE ENVIRONMENT IS ASSESSING.
14. THE QUALITY OF THE SOCIETY IS ASSESSING.
15. THE QUALITY OF THE CULTURE IS ASSESSING.
16. THE QUALITY OF THE ECONOMY IS ASSESSING.
17. THE QUALITY OF THE POLITICS IS ASSESSING.
18. THE QUALITY OF THE RELIGION IS ASSESSING.
19. THE QUALITY OF THE SCIENCE IS ASSESSING.
20. THE QUALITY OF THE ARTS IS ASSESSING.

NOTE: THIS DRAWING IS THE COMPUTERIZED REPRODUCTION OF ORIGINAL. DRG. NO. 2, JOB NO. 52, DATED 26/06/63

SCALE - 1/2" TO A FOOT		
CHECKED: R.S. BASSI	DRAWN: DIDAR	DATE: 16-06-63
DRG No. 2	JOB No. 52	SET OF 4

BOOTH'S TYPE
'A' & 'B' SECTOR 23
ELEVATION & SECTIONS

DISCLAIMER
THROUGH EVERY CARE HAS BEEN TAKEN TO PROVIDE THE CORRECT VERSION OF THE ARCHITECTURAL CONTROL ON THIS DIGITIZED (DRG) FORMAT. YET IN CASE OF ANY DISCREPANCY, THE MASTER COPY OF THE ARCHITECTURAL CONTROL, APPLICABLE ON EACH ISSUE SET, IS AVAILABLE IN THE COMMERCIAL RECORDS OF THE OFFICE OF CHIEF ARCHITECT OR HER/HS INTERPRETATION WILL OVERRULE THE DIGITIZED FORMAT.